



# Field Extender™ 5.5D

for Sage Accpac ERP 5.5

## Add Unlimited Optional Fields and Electronic Document Attachments to Any Sage Accpac Transaction!

Field Extender™ 5.5D is an SDK application for the creation and maintenance of unlimited optional fields and electronic documents. Optional fields created by Field Extender™ are attached to Sage Accpac transactions at Batch, Entry and Detail Line levels. Optional fields can be entered using customized VB macros or a generic Optional Fields Entry screen. Field Extender™ is an excellent tool for creating advanced reports, implementing customized Sage Accpac solutions and managing electronic documents. Any number of fields can be dynamically defined as "Electronic Attachment", "Date", "Numeric", "Boolean", "String" and many more types. Add images and specification sheets to "IC Items", extending parameters for inventory items; or a dozen fields to "O/E Order/Invoice Entry" to capture order processing, shipping, forwarding and other sales related information; or add departments, regions, sales and product related fields to "G/L Journal Entry" at detail line level. Validate optional field values against existing Sage Accpac tables, in addition to user defined validation tables. Your imagination is the limit!

SAMLTD - F/E Optional Fields Entry

File Help

Transaction: O/E Invoice Entry Refresh...  Auto Refresh

Invoice Uniquifier	Order Number	I/C Day End Tra...	Customer Number	Bill To	Bill-To Address 1	Bill-To:z
65	ORD0000000000003	27	1520	Mr. Stephen Ker...	4730 112th Street	
257	ORD0000000000004	32	1200	Mr. Ronald Black	2820 Wabash R...	
513	ORD0000000000005	45	1105	Mr. Ronald Black	2820 Wabash R...	
577	ORD0000000000006	47	1200	ACME Plumbing	927 Warehouse ...	
641	ORD0000000000007	49	1100	Mr. Ronald Black	2820 Wabash R...	
705	ORD0000000000008	51	1240	ACME Plumbing	927 Warehouse ...	
769	ORD0000000000009	53	1400	Mr. Ronald Black	2820 Wabash R...	
961	ORD0000000000010	59	1105	Mr. Ronald Black	2820 Wabash R...	
1,025	ORD0000000000011	61	1200	ACME Plumbing	927 Warehouse ...	
1,089	ORD0000000000012	63	1100	Mr. Ronald Black	2820 Wabash R...	
1,153	ORD0000000000013	65	1240	ACME Plumbing	927 Warehouse ...	
1,217	ORD0000000000014	67	1400	Mr. Ronald Black	2820 Wabash R...	
1,345	ORD0000000000015	69	1200	Mr. Ronald Black	2820 Wabash R...	
1,409	ORD0000000000016	71	1210	ACME Plumbing	927 Warehouse ...	

Transaction: O/E Invoice Entry

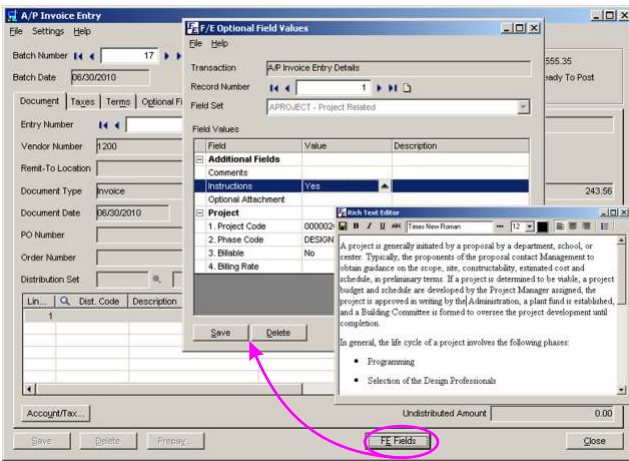
Record Number: 1

Field Values

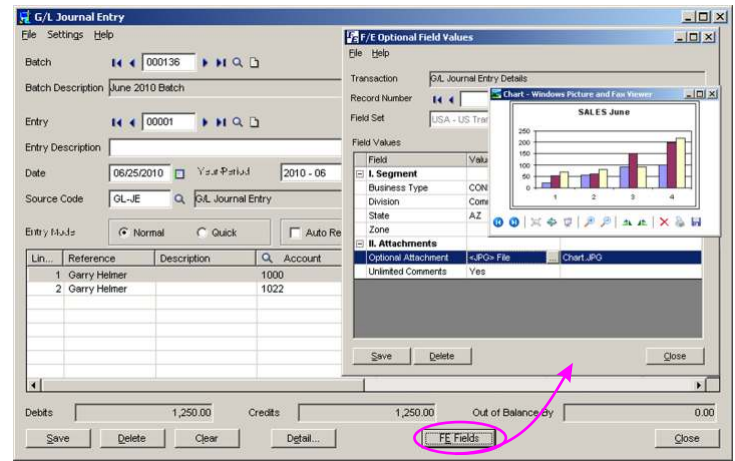
Field	Value	Description
<b>Bank Details</b>		
Account Number	4500678945	
Bank	HSBS	
<b>Other Details</b>		
Expiry Date	12/31/2007	
Salesperson	Bill Bhais	

Save Delete Close

Generic Optional Fields Entry Screen Works  
With Any Sage Accpac ERP Transaction



*Rich Text Editor Available for Optional Fields*



*Attach Files of ANY Format to Sage Accpac Transactions*

**Functional Features**

- Supports Electronic Document Attachments.
- Supports Multiple FE Records per Sage Accpac Record.
- Supports dynamic creation of "Date", "Numeric" and "String" fields. Other field types that can be used are the following: Binary, Boolean, Time, Integer, Long, Money, Real.
- Supports grouping of fields per Sage Accpac UI.
- Supports Default Field Values.
- Supports Validation Against Sage Accpac Tables.
- Supports Read Only Fields.
- Supports Hidden Fields.
- Supports Rich Text Fields with Import/Export functionality.
- Field Extender™ is launched through customized Sage Accpac User Interfaces or the Optional Fields Entry UI.

**Highlights**

- Supports Sage Accpac Verify Database.
- Supports multiple company databases.
- Supports all databases supported by Sage Accpac.
- Supports DBDUMP & DBLOAD.
- Supports multi-lingual user interfaces.

**Compatibility**

- Sage Accpac ERP version 5.5.

**Applications Available From Systronics**

- |  |                           |  |   |  |                            |
|--|---------------------------|--|---|--|----------------------------|
|  | <b>AR-AP Settlements™</b> |  | <b>I/C Item Converter™</b>                |  | <b>Royalty Payments™</b>   |
|  | <b>BACCPAC™</b>           |  | <b>I/C Multi-Location Cost Averaging™</b> |  | <b>Systronics iPortal™</b> |
|  | <b>Database Manager™</b>  |  | <b>I/C Stock Aging Report™</b>            |  | <b>Trade Finance™</b>      |
|  | <b>CashWorks™</b>         |  | <b>Intercompany Aging Reports™</b>        |  | <b>Trade Job Costing™</b>  |
|  | <b>Field Extender™</b>    |  | <b>MyHelp™</b>                            |  |                            |
|  | <b>GULF*Gratuity™</b>     |  | <b>Revenue and Expense Deferrals™</b>     |  |                            |

**MyOwnAddOn™: An Innovative Custom Development Service Available From Systronics!**



For additional information please visit  
[www.systronics.com/fieldextender](http://www.systronics.com/fieldextender)  
 Contact us at [sales@systronics.com](mailto:sales@systronics.com)

Copyright 2003-2008 Systronics L.L.C. All rights reserved.

Systronics, the Systronics logo, AR-AP Settlements for Sage Accpac, BACCPAC for Sage Accpac, CashWorks for Sage Accpac, Field Extender for Sage Accpac, GULF\*Gratuity, I/C Item Converter, I/C Multi-Location Cost Averaging, I/C Stock Aging Report, Intercompany Aging Reports, MyHelp for Sage Accpac, Revenue and Expense Deferrals for Sage Accpac, Royalty Payments for Sage Accpac, Systronics iPortal, Trade Finance for Sage Accpac, and Trade Job Costing for Sage Accpac are trademarks of Systronics L.L.C.

Sage Software, the Sage Software logos, and the Sage Software product and service names mentioned herein are registered trademarks or trademarks of Sage Software, Inc., or its affiliated entities. Used by permission. All other trademarks are property of their respective owners. The contents of this brochure including specifications, system recommendations, program integration, and program requirements are subject to change without notice.

**Business Benefits Gained as a Result of Implementing Field Extender™ :**

- Adds Electronic Document Management to Sage Accpac.
- Adds Optional Fields anywhere in Sage Accpac.
- Extends reporting capabilities.
- Adds fields on batch, entry, and detail line levels.
- Increases flexibility of data types.
- Supports 3<sup>rd</sup> Party SDK applications.
- Reduced Ongoing Costs with Easy Installation, Configuration & Support.
- Web Deployment.

**Technical Details**

- Field Extender™ is a Sage Accpac SDK application.
- Required Sage Accpac modules: SM.

**Minimum System Requirements**

- Windows 2000 or XP workstation, IE v.6.0 or later.
- Minimum Pentium 600 MHz processor, 256 MB RAM, 200 MB of free hard disk space.

**About Systronics**

Systronics is a Sage Software Development Partner and a Microsoft Gold Certified Partner, in business since 1977. Systronics has forged partnerships with Sage Software and Microsoft for over thirteen years.